

A Complete Door System

**THERMA TRU**  
DOORS

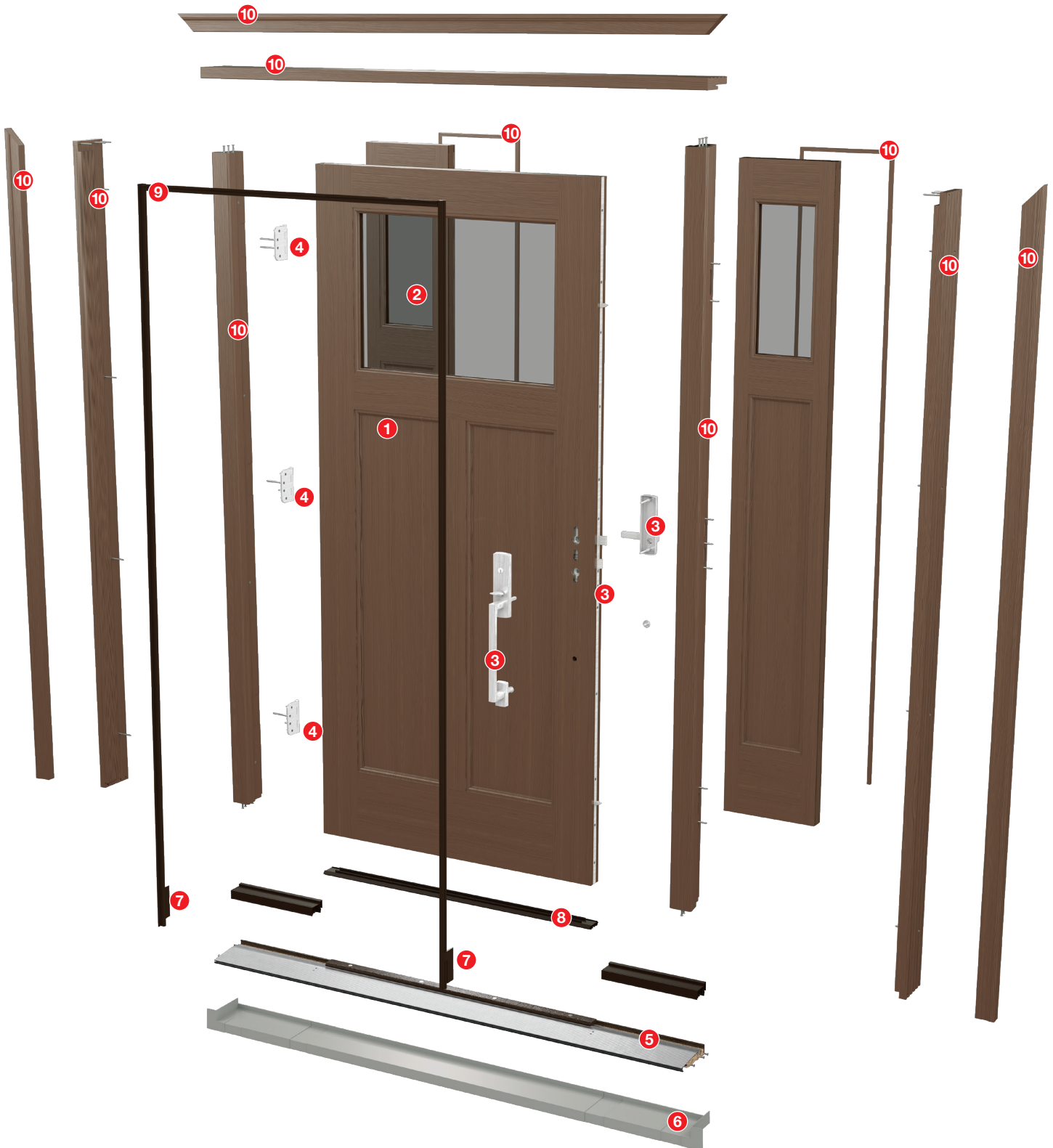


Uncompromising quality, inside and out.

# Engineered to work together.

A Therma-Tru® door system with genuine Therma-Tru components is engineered with craftsman precision for durability and reliability through the years. From the door slab and glass to the hinges and sill, Therma-Tru specifies each piece to work together at the most critical points where an ordinary door system's performance can fail.

So when a homeowner chooses a complete Therma-Tru door system, you can be confident it will perform as exceptionally as it looks.



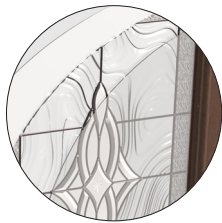
# A Complete Door System



**1 Fiberglass Door Panel**  
Delivers years of low-maintenance durability. Unlike wood, fiberglass will not warp or rot. Unlike steel, it will not dent or rust.



**7 Corner Seal Pads (Inswing Only)**  
Fit securely behind the weatherstrip to help block wind-driven moisture infiltration at the bottom corner of the door system.  
**More on page 20.**



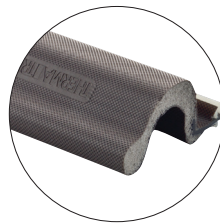
**2 Glass**  
Welcomes natural light into the home and is available in a variety of styles, many featuring triple-pane construction.



**8 Bottom Sweeps (Inswing Only)**  
A dual-bulb, dual-fin design helps maintain tight contact with adjustable sill caps and creates added barriers against moisture.  
**More on pages 15–17.**



**3 Multi-Point Locking System (Recommended)**  
Engages the door and frame at three points from top to bottom for enhanced sealing and security.  
**More on pages 22–24.**



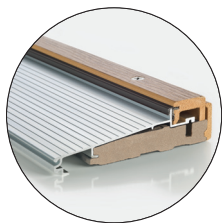
**9 Weatherstrip**  
Features a resilient design to help deliver a precise seal between the door and frame.  
**More on page 21.**



**4 Hinges**  
Ensure smooth operation and position the door so it creates a tight seal with the weatherstrip when closed.  
**More on page 19.**



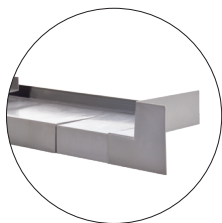
**10 Composite Door Frame\***  
Provides a rot-free solution that delivers extra protection from the damaging effects of moisture.  
**More on pages 10–13.**



**5 Sill**  
Provides a solid stepping surface and forms a tight seal at the bottom of the door system to help channel moisture away from the home.  
**More on pages 14–18.**



**Astragal**  
Covers the margin between double doors to help complete the seal against air and moisture infiltration, with aluminum construction for stability, holding power and durability.  
**More on page 25.**



**6 Sill Pan**  
Adds an extra layer of protection to help keep moisture away from the subfloor.  
**More on page 15.**

---

Need help determining which parts you need for your Therma-Tru door system?  
See pages 26–27 for more information.

---

# Backed by our lifetime limited warranty.

We can stand behind more parts and for longer than most other door companies because we make or specify everything that goes into our door systems. The homeowner has one source, Therma-Tru, to turn to if an issue arises with the door system.<sup>1</sup> Other companies either don't warrant as many parts of the door system or warrant them for a shorter period of time. That could leave the homeowner without coverage and confused about who to turn to if issues arise.



TRANSFERABLE

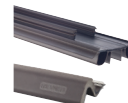
Classic Craft



Fiber-Classic and Smooth-Star



## Warranty Coverage



	Door Panel	Glass & Lite Frame	Multi-Point Locking Mechanism <sup>2</sup>	Sill & Hinges <sup>2</sup>	Corner Seal Pads <sup>3</sup>	Bottom Sweep <sup>3</sup> & Weatherstrip <sup>3</sup>	Composite Door Frame <sup>4</sup>	Storm Door System
<b>Therma-Tru. Classic Craft. 1x Transferable Lifetime Limited Warranty</b>	LIFETIME 1x Transferable	LIFETIME 1x Transferable	LIFETIME 1x Transferable	LIFETIME 1x Transferable	LIFETIME 1x Transferable	LIFETIME 1x Transferable	LIFETIME 1x Transferable	LIFETIME 1x Transferable
<b>Therma-Tru Fiber-Classic, Smooth-Star and Pulse Fiberglass Doors Lifetime Limited Warranty</b>	LIFETIME	LIFETIME	LIFETIME	LIFETIME	LIFETIME	LIFETIME	LIFETIME + 10-Year Transferable Warranty Rider	LIFETIME



## Contributing to an energy-efficient home.



More than 80% of Therma-Tru® door and glass options are ENERGY STAR® qualified, contributing to an energy-efficient home. By helping to keep heating and air conditioning sealed in the house, a complete door system can provide a boost to home energy efficiency.

<sup>1</sup>Excluding improper assembly of components into a door system by the distributor, dealer, builder or remodeler, and the installation of the door system.

<sup>2</sup>Excluding installations within 5 miles of a body of salt water and the finish.

<sup>3</sup>Excluding normal wear and tear.

\*See your Therma-Tru seller for details on product availability.

Note: See your Therma-Tru seller or visit [www.thermatru.com](http://www.thermatru.com) for details on ENERGY STAR qualified products and for details on limited warranties and exclusions.

Top: Smooth-Star Door – S1100

# Tru-Defense® Warranty Rider


A Therma-Tru® door system with Tru-Defense system components is a high-performing door system backed by a lifetime limited warranty and a comprehensive Tru-Defense Warranty Rider.



## Tru-Defense: The Ultimate Protection

More than beautiful doors and glass; a complete door system includes the components used to assemble it. We manufacture or specify every aspect of a complete door system. The Therma-Tru genuine components in a Tru-Defense door system are our premium options for long-lasting durability.

### Double Your Peace of Mind

When it comes to door systems, we believe that proper installation is just as important as having the best components. A Tru-Defense door system installed by a Therma-Tru Certified Door System Installer doubles your reimbursement eligibility should an issue arise.\* Look for the  icon.

**CERTIFIED**  
DOOR SYSTEM  
**INSTALLER**



[thermatru.com/installer](http://thermatru.com/installer)

\*The Rider does not warrant workmanship of anyone who assembles or installs a Tru-Defense door system, including Therma-Tru Certified Door System Installers, nor any damages caused by improper handling, assembly or installation.

\*\*See the Tru-Defense warranty rider for complete details on qualifying components.

\*\*\*Latch and deadbolt must meet Therma-Tru specifications.

Note: See your Therma-Tru seller or visit [www.thermatru.com](http://www.thermatru.com) for details on limited warranties and exclusions.

# Required Components for Tru-Defense Door System\*\* with Therma-Tru Fiberglass Door Slab & Components



**Door Frame** ✚  
Provides a solid structure for the door slab and components.  
Recommended: Therma-Tru Composite Door Frame



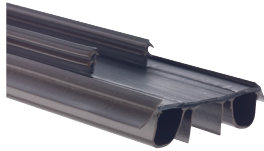
**Corner Seal Pads** ✚  
(Inswing Only)  
Fit securely behind the weatherstrip to help block wind-driven moisture infiltration at the bottom corner of the door system.



**Composite Adjustable Sill** ✚  
Provides a solid stepping surface and forms a tight seal at the bottom of the door system to help channel moisture away from the home.



**Weatherstrip** ✚  
Features a resilient design to help deliver a precise seal between the door and frame.



**Bottom Sweep** ✚ (Inswing Only)  
A dual-bulb, dual-fin design helps maintain tight contact with adjustable sill caps and creates added barriers against moisture.



**Astragal** ✚ (Double Doors)  
Covers the margin between double doors to help complete the seal against air and moisture infiltration, with aluminum construction for stability, holding power and durability.



**Hinges** ✚  
Ensure smooth operation and position the door so it creates a tight seal with the weatherstrip when closed.



**Rain Guard** ✚  
(Outswing Only)  
Creates a barrier at the top of the door to protect against moisture infiltration.

## Recommended Components



**Multi-Point Locking System** ✚  
(MPLS)  
Engages the door and frame at three points from top to bottom for enhanced security and sealing.



**Sill Pan** ✚  
Adds an extra layer of protection to help keep moisture away from the subfloor; protects flooring by catching and draining water in the event of infiltration.

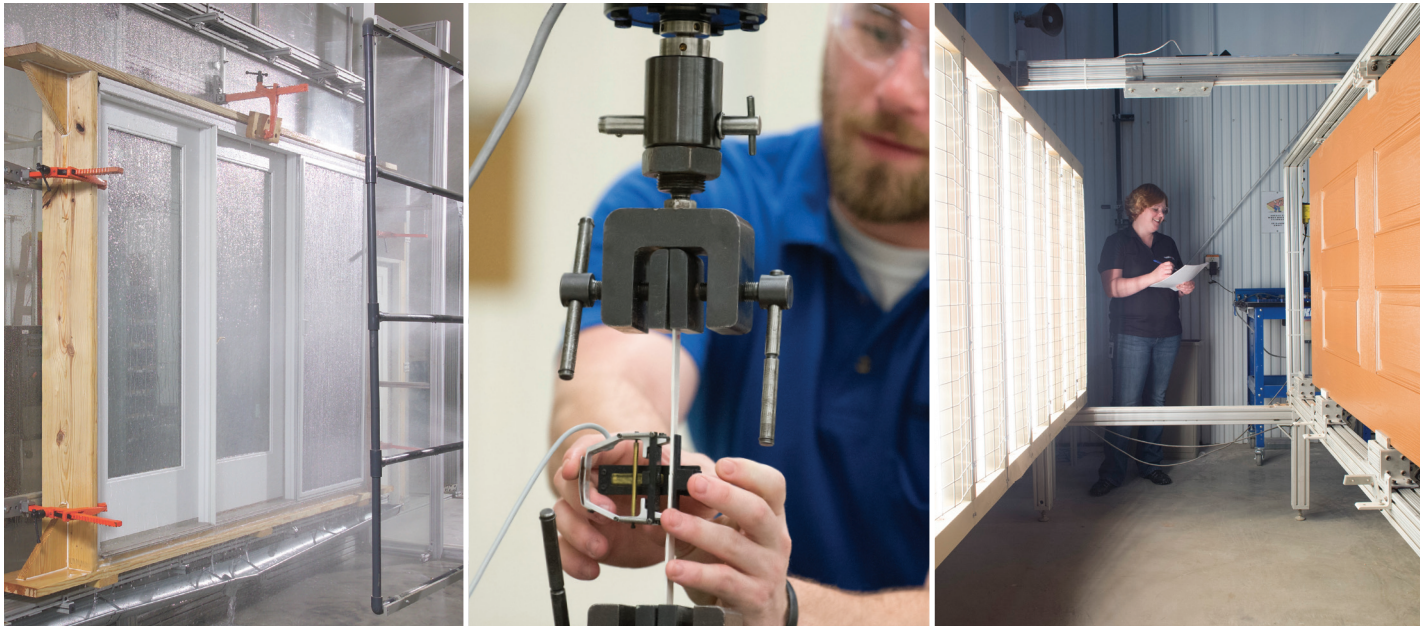
### Levels of Reimbursement

System Components	Reimbursement Eligibility	Reimbursement Eligibility with a Certified Installer
Latch & Deadbolt (No Sill Pan)***	\$250	\$500
Latch & Deadbolt with Sill Pan***	\$500	\$1,000
MPLS (No Sill Pan)	\$1,000	\$2,000
MPLS with Sill Pan	\$1,250	\$2,500

Baseline components required to qualify for the Tru-Defense Warranty Rider. Look for components with the ✚ icon.

# Quality tested to meet tough expectations.

Genuine Therma-Tru® components are put through multiple rigorous tests to help ensure that they will live up to a homeowner's toughest quality and performance expectations. We even have our own engineering lab – approved to perform specific test methods with a third-party witness\* – as part of our ongoing commitment to ensuring that our products live up to our high standards for durability and reliability.



## Tested for endurance.



The door is opened and closed repeatedly. The slam test is performed to commercial standards (AAMA 920), which are stricter than residential requirements, to help ensure long-lasting durability and reliability.

## Tough when you need it.



A heavy object is repeatedly rolled back and forth over the sill. Our barrel roll test simulates moving household appliances in and out of the house on a dolly. This test helps ensure the long-lasting durability and reliability of our sills.

## Confidence on the coast.



Components are immersed in a simulated salt water fog. The salt fog immersion test (ASTM B117) simulates a highly corrosive atmosphere to help ensure that components with metal finishes resist corrosion.

## Strength in a hurricane.



Our Impact-rated doors pass a large missile impact test. We blast a 9 lb. 2" x 4" stud into the doors at 34 mph to prove they're the better choice for strength and stability.

## Ready for winter weather.



Exposing our glass to weather-like conditions helps verify that moisture and condensation will not get trapped inside.

## Superior sound dampening.



Therma-Tru Sound Transmission Class- (STC) rated Noise Reduction doors deliver aesthetics with a commercial level of performance for residential projects.

## Resists deterioration and color fading.



Components are subjected to accelerated amounts of UV (ultraviolet) light. Our QUV test helps ensure that weathersealing components and components with a colored finish resist deterioration and color fading with exposure to direct sunlight.

## High power testing.



Design Pressure (DP) ratings are based on a Therma-Tru door system's performance in Structural Wind Load. As an example: A DP-50 structural performance rating indicates that the door system has passed a structural test pressure of 75 lbs. per sq. ft. which is equal to a 165 mph wind.

\*Manufacturer's Test Facility Quality Assurance Validation Program, Architectural Testing, Inc.

\*\*Comparison of pendulum impact test results for Therma-Tru composite door frame and standard finger-jointed Pine wood door frame, both with similar pre-hung doors.



# Built for Safety & Security

Protect your home and everything in it, from family and pets to valuables and keepsakes. Therma-Tru® products are designed for durability and enhanced security with pieces and parts engineered as a complete system.



Scan to see our products put to the test.

---

**More reliable and up to 50% stronger on average than standard wood door frames when withstanding a simulated forced entry attempt by kicking in the door.\*\***

---



Pendulum Impact Test

## Therma-Tru Composite Door Frame

- Features full-length jambs with no finger joints for more reliable performance, and a continuous composite material that will not deteriorate over time, like wood.

## Multi-point locking system

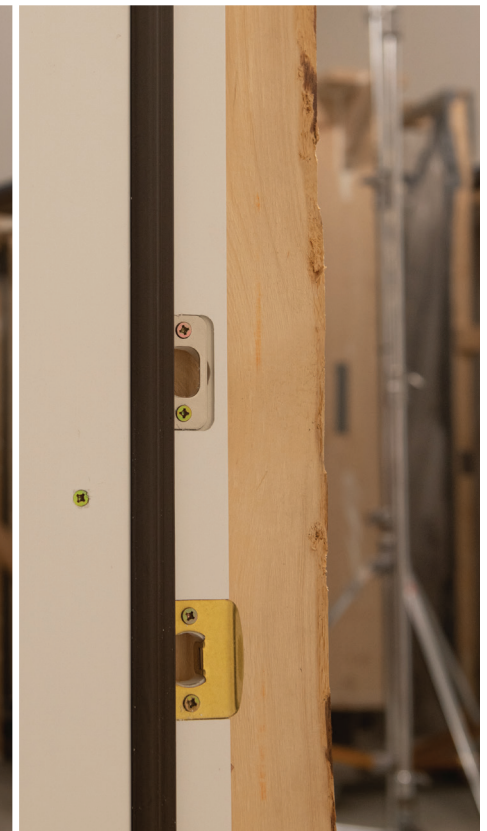
- Engages the door frame at three points from top to bottom, whereas traditional deadbolt assemblies only engage at one point.

## Adjustable security strike plate

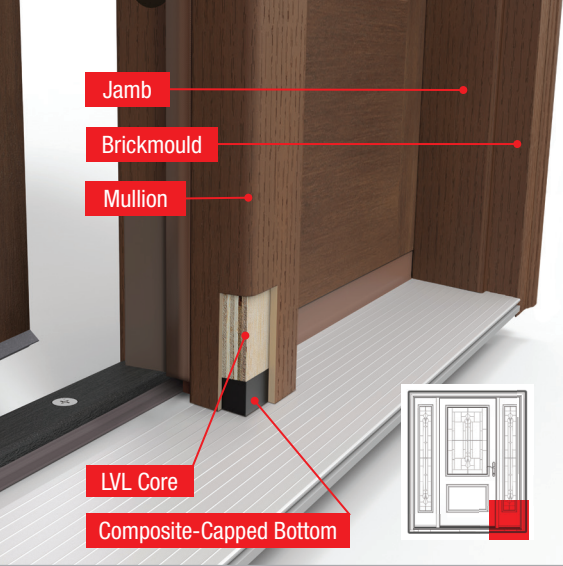
- Wraps around the door jamb and uses 2-1/2" screws to fully engage the frame of the house for added support and strength against forced entry.



Therma-Tru Pine Wood Jamb



Therma-Tru Composite Jamb



## Composite Door Frame\* featuring Tru-Guard™ Composite Technology

Therma-Tru composite door frame featuring Tru-Guard composite technology provides a rot-free solution engineered to work together with rot-resistant Therma-Tru doors and components.

- Delivers extra protection from the damaging effects of outside elements for peace of mind.
- Eliminates the risk of rot and wood-ingesting insects with a durable composite material that is virtually maintenance free. Rot-free door frame does not absorb moisture and resists mold, mildew and fungus.



### Reinforced Mullions

Provide additional structural support and stability. All mullions are reinforced with a co-extruded **A** LVL core to provide additional structural support and stability and feature a **B** composite-capped bottom to eliminate the risk of water absorption and maintain a rot-free composite exterior.

### Available Textures



#### Buff Grained Ready to finish.

- Features a universal wood grain to complement a wide range of grain species.
- Stain or paint to complement the entry – no sanding or priming required.



#### White Smooth Ready to install. Ready to finish.

- Features a matte finish similar to painted wood and includes a protective layer with UV inhibitors to help resist yellowing and fading.
- Ready to install as-is – no painting required. Or finish with stain or paint to complement the entry – no sanding or priming required.



### Code-Compliant Options

Therma-Tru composite door frame delivers the durability and reliability you expect from Therma-Tru with options to meet select national and local building code requirements.\*\*



Impact-rated to meet high-wind and coastal region codes and regulations, offering excellent performance in extreme weather conditions while providing added protection.\*\*



20-minute Fire-rated to meet most national and local code requirements for house-to-garage, multi-family residential and hotel / motel unit entries.\*\*

# The advantage is clear.




## Performance

Tested to be up to 50% stronger on average than standard wood door frames against kick-ins.***	✓
Resists Moisture & Humidity – Eliminates Risk of Swelling, Warping and Splitting	✓
Resists Mold, Fungus & Rot – Does Not Absorb or Retain Moisture	✓
Resists Insects – Help Protect from Wood-Ingesting Insects	✓
Impact and 20-Minute Fire Code Compliant**	✓

## Aesthetics

Ready to Finish – No Sanding or Priming Required	✓
Ready-to-Install Option – No Finishing Required – White Smooth	✓
Universal Grain Complements a Wide Range of Wood Species – Buff Grained	✓
Screw Plugs Match Frame Material and Conceal External Fasteners	✓

## Warranty

Therma-Tru Products & Applications	Warranty For First Homeowner	Warranty Riders Transferable 1x to Second Homeowner
Composite Door Frame + Classic Craft <sup>®</sup> Door + Components		Lifetime Transferable Full-System Rider
Composite Door Frame + Fiber-Classic <sup>®</sup> , Smooth-Star <sup>®</sup> , Pulse <sup>®</sup> Fiberglass Door + Components		10-Year Transferable Full-System Rider
Composite Door Frame Only		

\*See your Therma-Tru seller for details on product availability.  
 \*\*To confirm code requirements in your jurisdiction, always check with your local building code authority.  
 \*\*\*Comparison of pendulum impact test results for Therma-Tru composite door frame and standard finger-jointed Pine wood door frame, both with similar pre-hung doors.  
 Note: See your Therma-Tru seller or visit [www.thermatru.com](http://www.thermatru.com) for details on product approvals and installation instructions, available product sizes and options, limited warranties and exclusions, and Rider. Always confirm building code requirements in your area before buying. Follow weather and news reports to assess severe weather situations and obey local authorities' shelter and evacuation orders. No product guarantees safety for persons or property, nor makes any premises hurricane- or impact-proof. To see full results of third-party Intertek, Warnock-Hersey testing, visit [www.thermatru.com/performance](http://www.thermatru.com/performance) data.

# Therma-Tru® Composite Door Frame Parts

See your Therma-Tru seller for a full list of available product sizes and options.

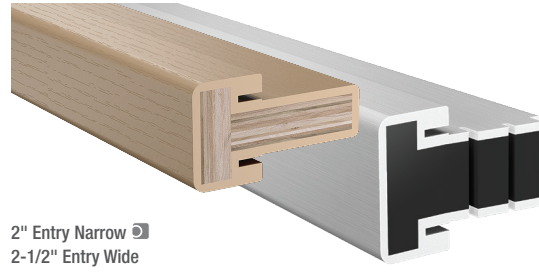
## Jambs



4-1/8"  
4-9/16"   
5-1/4"  
6-9/16"   
7-1/4"

Pre-inserted weatherstrip option available for select white smooth jambs and mullions.

## Mullions

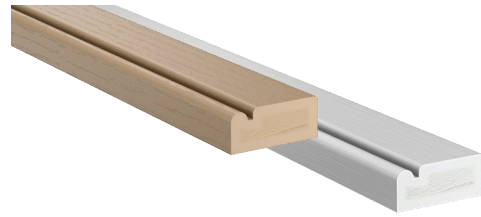


2" Entry Narrow   
2-1/2" Entry Wide

## Trim



2" Brickmould WM180



1-5/8" Florida Brickmould WM176

## Mull Casing

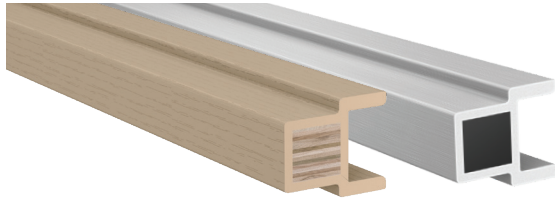


1-15/32" x 1-1/16"



1-7/32" x 7/32"  
**NEW SIZE** 2" x 7/32"

## Storm Door-Ready Mullion Adaptor



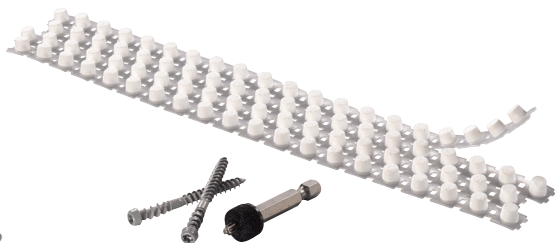
2" x 1-11/16"  
(Extends Storm Door-Ready Mullions by 1-1/4")

## Storm Door Adaptor



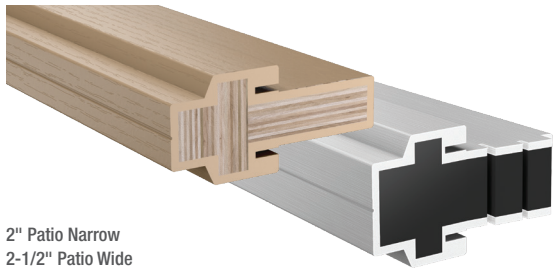
4-9/16" Base Adaptor  
Face Adaptor  
(Use 1-15/32" x 1-1/16" Mull Casing)

## Fasteners, Setting Tool & Screw Plug Covers



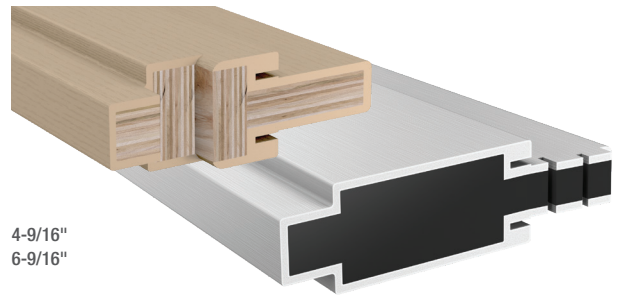
Jamb screw plugs hide unsightly screws, allowing jamb to be installed with screws through its thickest part for better aesthetics and long-term performance.

Screw plugs are available on a collated strip for ease of installation and finishing.

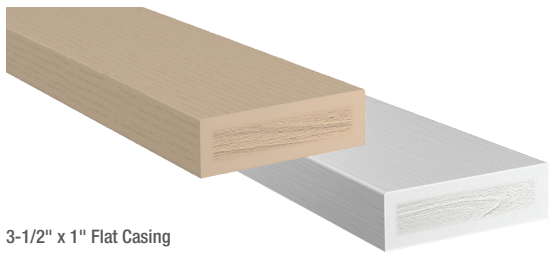


2" Patio Narrow  
2-1/2" Patio Wide

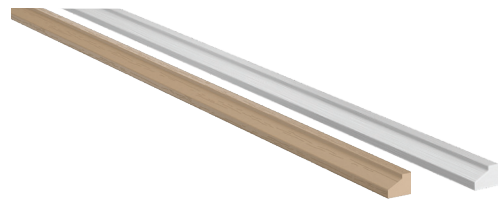
### Storm Door-Ready Mullions



4-9/16"  
6-9/16"



3-1/2" x 1" Flat Casing



7/16" x 5/16" Cove Mould

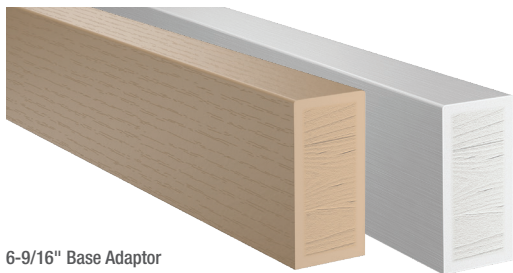


2-15/16" x 1-1/16" *Buff grained only.*  
2-15/16" x 3/8" *Buff grained only.*

### Transom Sills

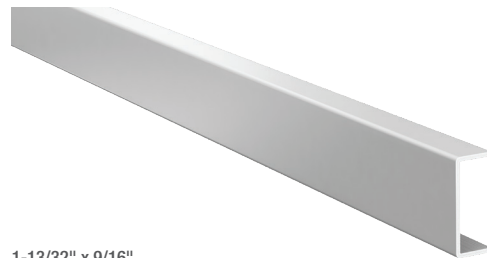


4-9/16"  
6-9/16"



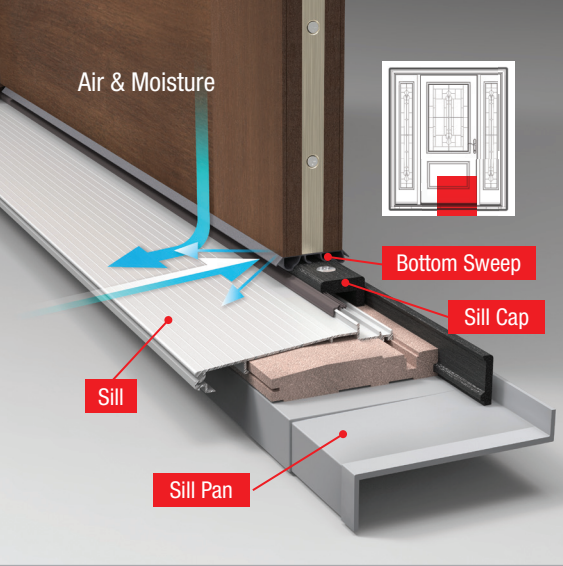
6-9/16" Base Adaptor

### Screen Track Cap



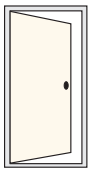
1-13/32" x 9/16"





## Sills, Bottom Sweeps, Sill Pan & Sill Covers

Genuine Therma-Tru® sills and bottom sweeps help form a tight seal against wind-driven moisture infiltration at the bottom of the door system and help channel moisture away from the home. The sill pan (recommended) adds an extra layer of protection to help keep moisture away from the subfloor.



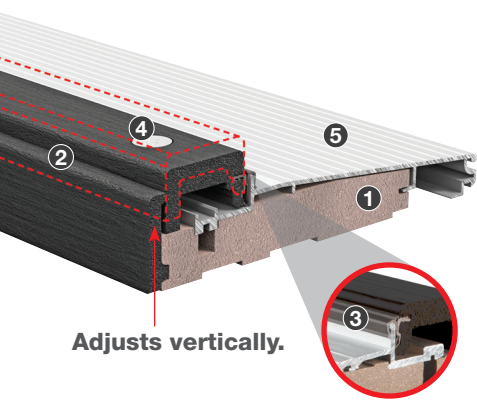
### Inswing Sills

- Designed to mate with our inswing bottom sweeps to help seal the margin between the door and sill.
- Help channel moisture away from the home with a 6-degree sloped ramp.
- Help provide a solid stepping surface with a slip-resistant tread pattern on the approach.
- A thermal break helps stop cold and heat from traveling through the sill and forming condensation inside the home.
- Offered in a variety of materials with features to meet the needs of different climates and exposures.

See finish options on page 18.

### Adjustable for long-lasting performance.

Genuine Therma-Tru sills are engineered with features to help minimize the potential for leaks and drafts. Our adjustable sills allow the sill cap to adjust vertically to close gaps over time, helping to maintain a tight seal between the sill and bottom of the door.

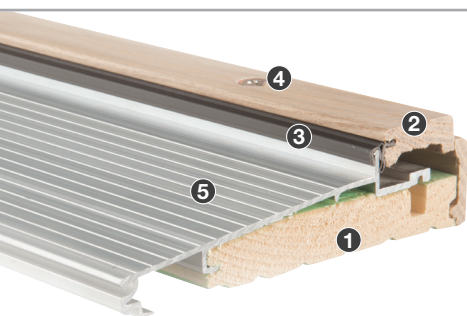


Adjusts vertically.

### Composite Adjustable Sill

- 1 Extra thick, continuous all-composite substrate.
- 2 Thick, through-colored composite cap and nosing, featuring a wood-grained appearance.
- 3 High-dam, narrow cap mates with the dual-bulb bottom sweep to deflect moisture away from the cap; engineered U-shaped weather seal creates an added barrier against wind-driven moisture.
- 4 Flush-fitting, premium screws form an uninterrupted sealing surface, resist corrosion, and adjust the cap to help maintain a tight seal.
- 5 Thick, 15-gauge aluminum approach provides excellent durability.

Note: Continuous length available with spread mullion capability to fill 49"-75" rough openings. See the Therma-Tru 2022 Architectural Details & Components manual for actual unit size specifications.

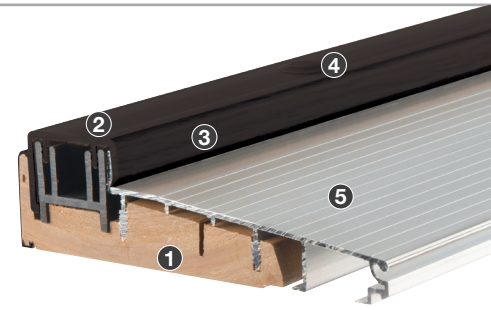


### Hardwood Adjustable Sill

- 1 Continuous moisture-resistant treated Pine substrate provides a solid stepping surface and resists rot.
- 2 Durable hardwood cap and nosing stands up to wear and can be stained to match the door and trim.
- 3 High-dam, narrow cap mates with the dual-bulb bottom sweep to help deflect moisture away from the cap; engineered U-shaped weather seal creates an added barrier against wind-driven moisture infiltration.
- 4 Flush-fitting zinc dichromate screws form an uninterrupted sealing surface, resist corrosion, and adjust the cap vertically to help maintain a tight seal over time.
- 5 Thick, 15-gauge aluminum approach provides excellent durability and a solid stepping surface.

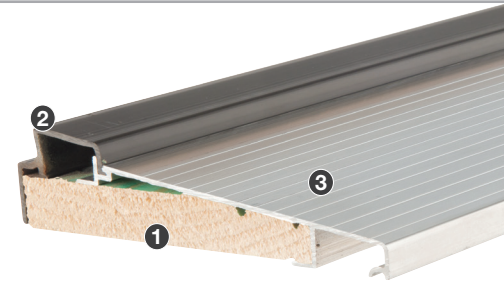
## Basic Composite Adjustable Sill

- ❶ Continuous moisture- and insect-resistant all-composite injection molded substrate provides a solid stepping surface and superior rot-resistance.
- ❷ Moisture- and insect-resistant composite cap and nosing resists rot.
- ❸ High-dam cap mates with the dual-bulb bottom sweep to help deflect moisture away from the cap.
- ❹ Zinc dichromate screws with removable screw caps adjust to help maintain a tight seal over time.
- ❺ Thick, 15-gauge aluminum approach provides excellent durability and a solid stepping surface.



## Basic Fixed Sill

- ❶ Continuous moisture-resistant treated Pine substrate provides a solid stepping surface and resists rot.
- ❷ Slanted cap and nosing mates with the single-bulb bottom sweep to help form a tight seal.
- ❸ 17-gauge aluminum approach provides a solid stepping surface.



## Inswing Bottom Sweeps

- Designed to mate with our inswing sill caps to help seal the margin between the door and sill.
- Kerf-applied to fit securely into the bottom of the door to help protect against moisture penetration.
- Heavy-duty material resists deterioration, holding its shape to help maintain contact over time.



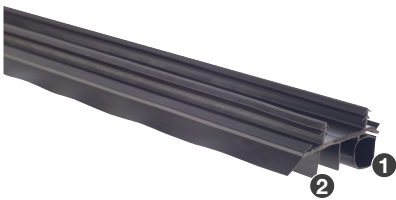
### Kerf-Applied Dual-Bulb / Dual-Fin Bottom Sweep ❖

- ❶ Dual bulbs help maintain full contact with narrow sill caps.
- ❷ Dual fins create added barriers against moisture infiltration.
- ❸ Integrated rain deflector helps push moisture away from the cap.

**Sills:** Composite Adjustable | Hardwood Adjustable | Basic Composite Adjustable  
**Colors:** Bronze | White



Note: Non-kerf-applied option available for replacement applications.

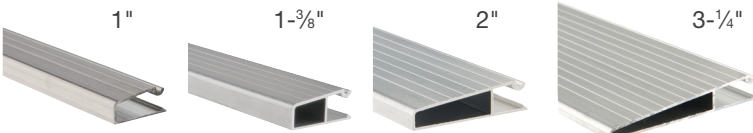


### Kerf-Applied Single-Bulb Bottom Sweep

- ❶ Single bulb helps maintain tight contact with slanted sill caps.
- ❷ Multiple fins help block moisture infiltration and deflect moisture away from the cap.

**Sill:** Basic Fixed  
**Color:** Bronze

## Inswing Sill Extenders



Available for 3-1/4" and 5-3/4" sills only.

Available for 4-9/16" sills only.

## Inactive Door Bottom ❖

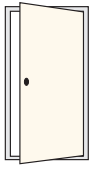


**Sills:**  
 Composite Adjustable  
 Hardwood Adjustable  
**Color:**  
 Bronze

## Sill Pan (Recommended – Inswing Only) ❖



- Fits between the sill and subfloor for an added layer of protection against moisture.
- Engineered with sloped channels to help collect and drain moisture away.
- Moisture- and insect-resistant composite construction resists rot.
- Molded corners allow for a continuous seal, unlike wraps or site-made alternatives.



## Outswing Sills

- Allow for a tight seal between the subfloor and door for superior performance against wind, air and water infiltration.
- Help provide a solid stepping surface with a slip-resistant tread pattern on the approach.
- Some options include a thermal break, helping stop cold and heat from traveling through the sill and forming condensation inside the home.
- Offered in a variety of materials with features to meet the needs of different climates and exposures.

See finish options on page 18.



### Composite Outswing Sill +

- 1 Extra thick, continuous moisture- and insect-resistant all-composite substrate provides a solid stepping surface and superior rot resistance.
- 2 Thick, through-colored moisture- and insect-resistant composite cap and nosing resists wear and rot, featuring a realistic wood-grained appearance to complement home interiors.
- 3 Integrated removable weatherstrip creates a bumper effect, strengthening its seal with wind pressure.
- 4 Thick, 15-gauge aluminum approach provides excellent durability and a solid stepping surface.



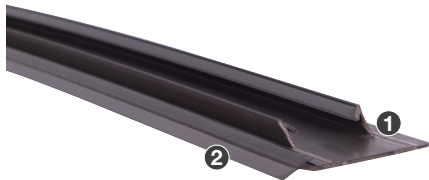
### Aluminum Sill with Thermal Break

- 1 Continuous moisture-resistant treated Pine substrate provides a solid stepping surface and resists rot.
- 2 All-aluminum cap resists corrosion.
- 3 Integrated removable weatherstrip creates a bumper effect, strengthening its seal with wind pressure.
- 4 Extra thick, 14-gauge aluminum approach provides excellent durability and a solid stepping surface.

Note: Also available without thermal break for warmer climates.

## Outswing Bottom Sweep

- Designed to provide added protection against wind-driven moisture infiltration at the bottom of the door.
- Kerf-applied to fit securely into the bottom of the door to help protect against moisture penetration.
- Heavy-duty material resists deterioration, holding its shape to help maintain contact over time.



- 1 Provides added protection at the bottom of the door.
- 2 Integrated rain deflector helps deflect moisture away from the cap.

Sills: Aluminum | Coastal  
Color: Bronze

## Outswing Sill Extender



Sizes:  
2"  
3/4"  
Finishes:  
Lightwood (Premium)  
Darkwood (Premium)

## Inactive Door Bottom



Sill:  
Composite Outswing  
Color:  
Bronze



## Coastal Sill

(Without Thermal Break – For Coastal Regions)

- 1 Continuous treated Pine substrate provides a solid stepping surface and resists rot.
- 2 All-aluminum cap resists corrosion and features an extra-high profile to provide improved resistance to wind-driven moisture infiltration.
- 3 Integrated removable weatherstrip creates a bumper effect, strengthening its seal with wind pressure.
- 4 Extra thick, 14-gauge aluminum approach provides excellent durability and a solid stepping surface.



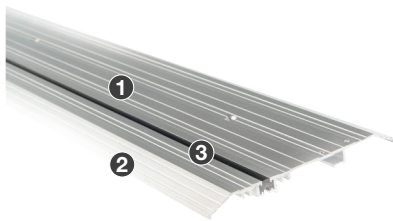
Note: Helps meet code requirements in HVHZ (High Velocity Hurricane Zone) coastal regions.\*

## ADA Applications

### Public Access Sill with Thermal Break

(For ADA Applications – Inswing / Outswing)

- Meets code requirements for Americans with Disabilities Act- (ADA) compliant applications.\*
- Allows for a seal between the subfloor and door to help block wind-driven moisture infiltration.
- Designed to mate with our ADA bottom sweep to help seal the margin between the door and sill.



- 1 All-aluminum construction resists corrosion.
- 2 1/2"-high uninterrupted surface features an ADA-compliant 1:2 ramp slope ratio.
- 3 An epoxy thermal break helps stop cold and heat from traveling through the sill and forming condensation inside the home.

Note: Also available without thermal break for warmer climates. Door systems built with public access sills have little resistance to water penetration and have a potential to leak if installed exposed to weather. We recommend these systems be installed away from weather under large soffits or overhangs.

### Bottom Sweep (ADA / Replacement)

- Designed to mate with our public access sill to help seal the margin between the door and sill.
- Heavy-duty material resists deterioration, holding its shape to help maintain contact over time.



- 1 Maintains tight contact with the sill surface.
- 2 Multiple fins help deflect moisture away from the cap and block moisture infiltration.

Sills: Public Access

## Sill Protection

### Sill Covers (Recommended)

- Fits over the sill to help protect the sill cap and finish from damage during installation.
- Offered in a variety of options for a custom fit with most of our sills.
- Heavy-duty material withstands wear from moving heavy objects back and forth over the sill.

Note: Shown over composite adjustable sill.



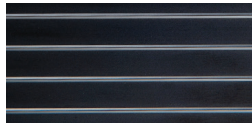
# Finish Options

Therma-Tru offers an array of popular finish options to complement decorative glass coming, and interior and exterior home fixtures, to suit the home's style. Check with your Therma-Tru seller for available finish and cap options.

## Sill Finishes



Mill

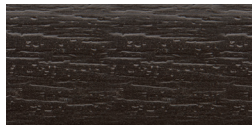


Bronze

## Cap Colors



Lightwood (Premium)  
Composite Adjustable /  
Composite Outswing



Darkwood (Premium)  
Composite Adjustable /  
Composite Outswing



Lightwood (Economy)  
Basic Composite Adjustable



Darkwood (Economy)  
Basic Composite Adjustable /  
Basic Fixed



Hardwood  
Hardwood Adjustable

	Inswing Options				Outswing Options				Public Access (Inswing / Outswing)	
	Composite Adjustable	Hardwood Adjustable	Basic Composite Adjustable	Basic Fixed	Composite Outswing	Aluminum with Thermal Break	Aluminum without Thermal Break	Coastal	Public Access (Inswing)	Public Access (Outswing)
<b>Sill Finishes</b>										
Mill	■	■	■	■	■	■	■	■	■	■
Bronze	■	■	■	■	■	■	■	●	■	■
<b>Cap Colors</b>										
Lightwood	■	●	■	●	■	●	●	●	●	●
Darkwood	■	●	■	■	■	●	●	●	●	●
Hardwood	●	■	●	●	●	●	●	●	●	●
<b>Sill Configurations</b>										
Single	■	■	■	■	■	■	■	■	■	■
French	■	■	●	■	■	■	■	■	■	■
Double Patio	■	■	●	●	■	●	●	●	●	●
Triple Patio	■	●	●	●	■	●	●	●	●	●
Lineal	■	■	●	●	●	●	●	●	●	●
<b>Sidelite Configurations</b>										
Boxed Sidelites	■	●	●	●	●	●	●	●	●	●
Single with Sidelites	■	■	●	●	■	●	●	●	●	●
Single Vented Sidelites	■	●	●	●	●	●	●	●	●	●
French Vented Sidelites	■	●	●	●	●	●	●	●	●	●
<b>Depths</b>										
4-9/16"	■	●	■	■	■	●	■	■	■	■
5-3/4"	■	■	■	■	■	■	●	●	●	●
6-9/16"	●	●	●	●	●	●	●	●	●	■
7-3/4"	■	■	■	■	●	■	●	●	●	●
<b>Substrates</b>										
Composite Extruded	■	●	●	●	■	●	●	●	●	●
Composite Injection Molded	■	●	■	●	●	●	●	●	●	●
Treated Pine	●	■	●	■	●	■	■	■	●	●
<b>Other Options</b>										
Integrated Thermal Break	■	■	■	■	■	■	●	●	■	■
Screen Rail Available	■	■	●	●	■	●	●	●	●	●
Sill Extenders Available	■	■	■	●	■	●	●	●	●	●
Sill Covers Available	■	■	■	■	■	●	●	●	●	●
Tru-Defense Eligible*	■	●	●	●	■	●	●	●	●	●
With Anchor Holes	●	●	●	●	●	■	■	●	■	■
Without Anchor Holes	■	■	■	■	■	■	●	■	●	●

## Hinge Finish Options



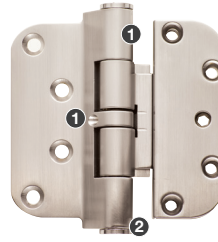
Bright Brass    Brushed Nickel    Black Nickel    Polished Chrome    Oil-Rubbed Bronze    Stainless Steel    Zinc Dichromate

# Hinges

## Adjustable +

**Finish Options:**  
Bright Brass  
Brushed Nickel  
Black Nickel  
Polished Chrome  
Oil Rubbed Bronze

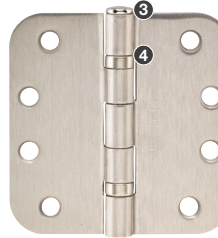
(Recommended for Classic Craft premium entryways.)  
Allow the door to be moved horizontally and vertically in the frame, maintaining alignment and keeping the door performing beautifully.



## Classic Craft. Ball-Bearing - ANSI (C-Shaped) Hole Pattern +

**Finish Options:**  
Bright Brass  
Brushed Nickel  
Black Nickel  
Polished Chrome  
Oil Rubbed Bronze  
Stainless Steel  
Zinc Dichromate

(Recommended for Classic Craft premium entryways.)  
Ball bearings help protect each hinge pivot for added support and stability.



## Classic Craft. Ball-Bearing - Staggered Hole Pattern +

**Finish Options:**  
Bright Brass  
Brushed Nickel  
Black Nickel  
Polished Chrome  
Oil Rubbed Bronze  
Stainless Steel  
Zinc Dichromate

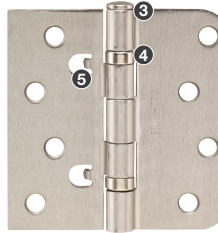
(Recommended for Classic Craft premium entryways.)  
Ball bearings help protect each hinge pivot for added support and stability. Staggered hole pattern helps simplify assembly process. Note: Non-removable pin option available with fixed pins, providing security on outswing applications.



## Self-Aligning Ball-Bearing +

**Finish Options:**  
Bright Brass  
Brushed Nickel  
Black Nickel  
Polished Chrome  
Oil Rubbed Bronze  
Stainless Steel  
Zinc Dichromate

(Recommended for heavier Fiber-Classic, Smooth-Star and Steel doors.)  
Contains locating tabs to assist in accurate alignment with specific door systems.  
Ball bearings help protect each hinge pivot for added support and stability.



## Self-Aligning +

**Finish Options:**  
Brushed Nickel  
Black Nickel\*\*  
Polished Chrome\*\*  
Oil Rubbed Bronze  
Stainless Steel\*\*  
Zinc Dichromate

Contains locating tabs to provide accurate alignment with specific door systems. Note: Non-removable pin option available with fixed pins, providing security on outswing applications.



## Security Tab +

**Finish Options:**  
Brushed Nickel  
Stainless Steel  
Zinc Dichromate

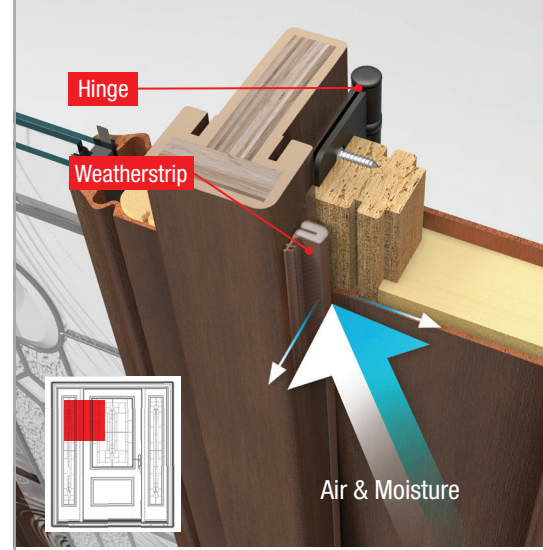
Security tabs prevent door from being taken off hinges (when closed), providing security on outswing applications.



## Spring-Loaded +

**Finish Options:**  
Brushed Nickel  
Black Nickel  
Polished Chrome  
Oil Rubbed Bronze  
Stainless Steel  
Zinc Dichromate

UL Listed with adjustable self-closing spring mechanism that helps pull the door closed for convenience and meets code requirements that may be applicable in Fire-door applications.\*\*\*



## Long-lasting, smooth performance.

Genuine Therma-Tru hinges are engineered with long-lasting durability and reliability in mind. They position the door to properly compress the weatherstrip to help form a tight, even seal when the door closes. Without precision engineering in this critical area, the weatherstrip can pinch if the door is too tight or gap if it is too loose, letting air and moisture pass between the door and frame.

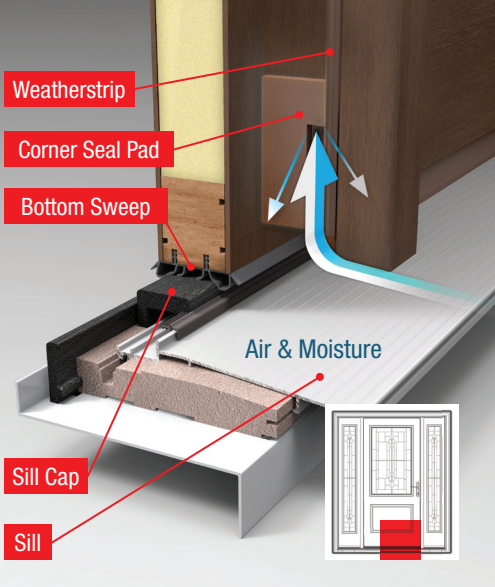
- Position the door for proper compression of the weatherstrip to form a tight seal when closed.
- Proper positioning also ensures smooth operation to help resist creaking and uneven wear.
- Offered in a variety of options designed to go with our door systems.

- 1 Hex screws adjust alignment of door in frame.
- 2 Fixed pins prevent door from being taken off hinges.
- 3 Removable pin option allows door to be taken off hinges.
- 4 Ball bearings help protect each hinge pivot, for added support and stability.
- 5 Locating tabs for accurate alignment.
- 6 Security tab prevents door from being taken off hinges (when closed) by driving out pins.
- 7 Hex screws adjust tension of spring mechanism.
- 8 Self-closing spring mechanism helps pull the door closed.

\*For full details on the Tru-Defense Warranty Rider, visit [www.thermatru.com/trudefense](http://www.thermatru.com/trudefense).

\*\*Finishes only available for NRP Hinge.

\*\*\*To confirm code requirements in your jurisdiction, always check with your local building code authority. Note: Note: See your Therma-Tru seller for details on available component and finish color options.



## Corner Seal Pads



### Classic Craft. 7-Shape Pads

#### Sills (Inswing Applications Only)

Composite Adjustable  
Hardwood Adjustable  
Basic Composite Adjustable  
Public Access

#### Colors

Bronze  
White



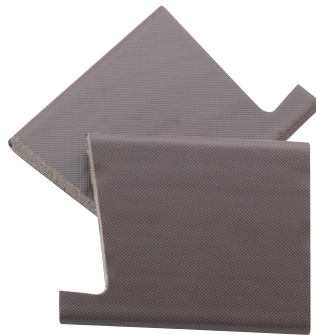
### Fiber-Classic. / Smooth-Star. 7-Shape Pads

#### Sills (Inswing Applications Only)

Composite Adjustable  
Hardwood Adjustable  
Basic Composite Adjustable  
Public Access

#### Colors

Bronze  
White



### Basic Fixed Pads

#### Sills (Inswing Applications Only)

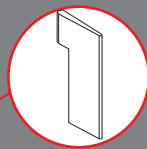
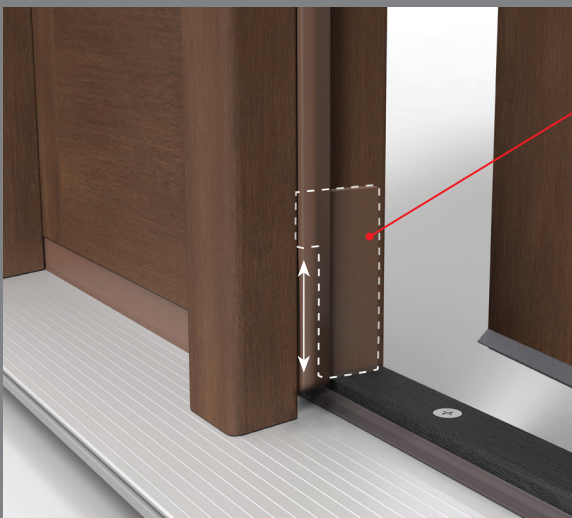
Basic Fixed

#### Colors

Bronze

Genuine Therma-Tru® **corner seal pads** (inswing only) complete the seal between the **sill cap**, **bottom sweep** and **weatherstrip** to help block potential pathways where wind-driven moisture can infiltrate the bottom corner of the door system. Without precision engineering in this critical area, wind pressure can push moisture-laden air through the corner and up the frame, leaking into the home and rotting the frame.

- Fit securely behind the weatherstrip to help block wind-driven moisture infiltration.
- Designed to mate with our inswing sills to complement weathersealing performance. (Not recommended for use on outswing applications.)
- Flexible, foam-filled material holds its shape over time, protected by a durable jacket to resist moisture and wear.



Creates an air pocket to inhibit water filtration.

### Innovative weathersealing solutions.

Genuine Therma-Tru weathersealing components are carefully engineered to maximize the seal between the door and frame. The 7-shape corner seal pad completes our jamb assembly. This innovative design creates an air pocket that helps prevent a vacuum from forming and wicking moisture up the weatherstrip and into the home.

# Removable Weatherstrip

- Engineered in a variety of profiles to mate with our door families for a precise seal between the door and frame.
- Kerf-applied to fit securely into the top and sides of the jamb; removable for finishing.
- Resilient design compresses when closed and springs back when open for long-lasting sealing power.
- Flexible, foam-filled material holds its shape over time, protected by a durable jacket to resist moisture and wear.



## Medium-Reach Weatherstrip

For square edge doors.

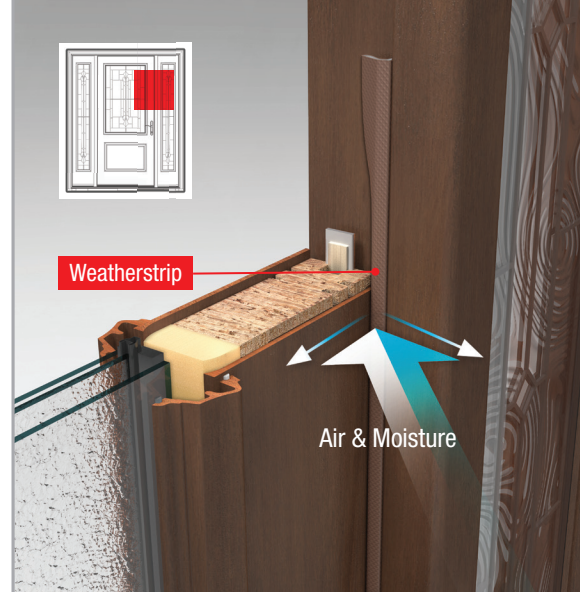
Colors  
Bronze  
White



## Long-Reach Weatherstrip

For bull edge doors.

Colors  
Bronze  
White



Genuine Therma-Tru. **weatherstrip** is specifically engineered in a variety of profiles to provide the best possible fit with our door systems, helping to deliver a precise seal between the door and frame. Without precision engineering in this critical area, misfitting weatherstrip can create gaps that allow air and moisture to pass through between the door and jamb.

# Rain Protection (Recommended)

- Helps repel moisture away from areas exposed to wind-driven water infiltration, enhancing weather protection.
- Durable aluminum construction on the rain deflector resists corrosion. Durable composite construction on the rain guard resists deterioration.
- Highly recommended for applications directly exposed to wind and rain.



## Rain Deflector (Inswing)

Pushes moisture away from the bottom of the door.

Colors  
Bronze  
White



## Rain Guard (Outswing)

Creates a barrier to moisture at the top of the door.

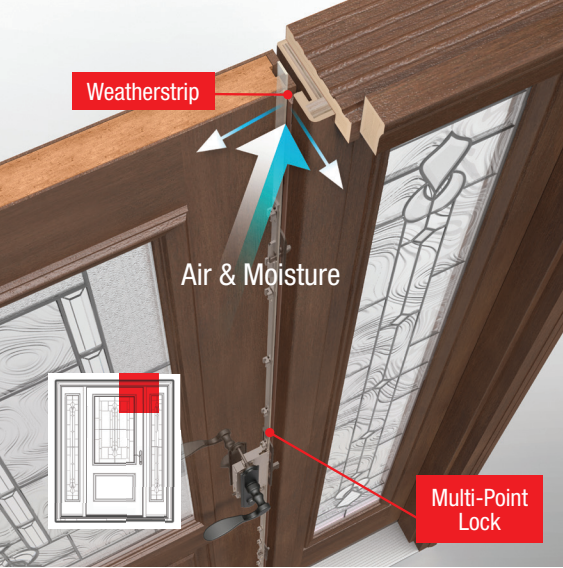
Colors  
Bronze  
White



Bottom of door; exterior view.



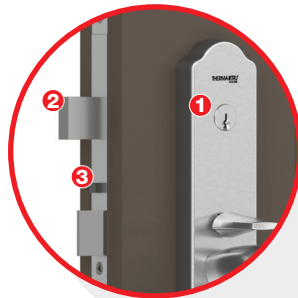
Top of door; exterior view.



Genuine Therma-Tru® multi-point locking systems engage the frame at three points from top to bottom, helping to preserve the seal even under wind pressure. Without precision engineering in this critical area, wind can push the top and bottom corners of the door away from the frame, allowing air and moisture to pass through.

- Provides more engagement of locking hardware than traditional deadbolt assemblies.
- Premium stainless steel construction provides excellent corrosion resistance.
- Highly recommended for 8'0" and double fiberglass door systems. (Not recommended for steel door systems.)

## Multi-Point Locking Systems (MPLS)



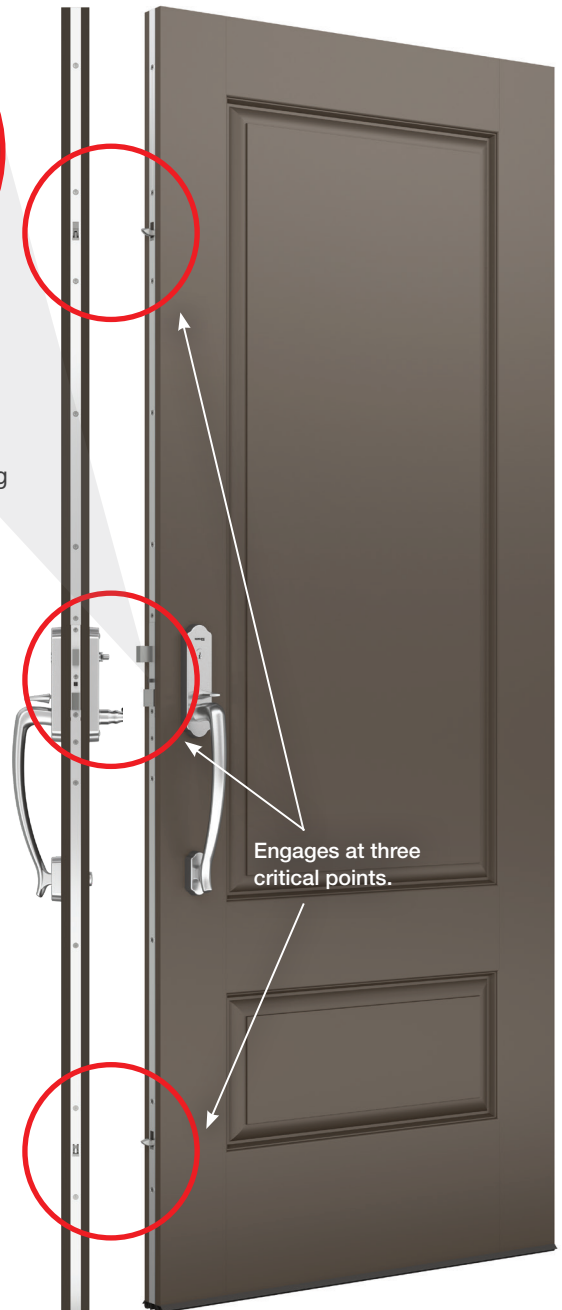
- 1 Self-lubricating locks.
- 2 1" premium stainless steel deadbolt.
- 3 Integrated mishandling device.



### Tongue

Heights:  
6'6"  
6'8"  
7'0"  
8'0"

Configurations:  
Inswing  
Outswing



Side view of door.

Exterior view of door.

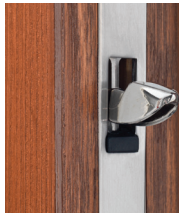
## Grip-Style MPLS +

Grip-style handlesets offer an intuitive approach to the multi-point locking system with on-trend aesthetics. A simple 90-degree twist of the thumbturn (interior) or a key (exterior) is all it takes to engage the door frame at three points with no need to lift the handleset lever. An integrated mishandling device protects the door and frame from accidental damage. Features deadbolt located above handleset. (Active option only. Not available for double door systems with an astragal.)





- 1 Self-lubricating locks.
- 2 1" premium stainless steel deadbolt.
- 3 Integrated mishandling device.



**Tongue**  
**Heights:** 6'6" 6'8" 7'0" 8'0"  
**Configurations:** Inswing Outswing



**Shootbolt**  
 (For door systems with an astragal.)  
**Heights:** 6'6" 6'8" 7'0" 8'0"  
**Configurations:** Inswing Outswing

Engages at three critical points.

Exterior view of door.

Side view of door.

### Lever-Style MPLS

Lever-style handlesets bring form and function together with decorative styles. A convenient upward turn of the handle is required before all three points will engage. An integrated mishandling device helps protect the door and frame from accidental damage. Features deadbolt below the handleset.



**Tongue**  
 (Included in vented sidelite units.)  
**Heights:** 6'6" 6'8" 8'0"

### Vented Sidelites MPLS

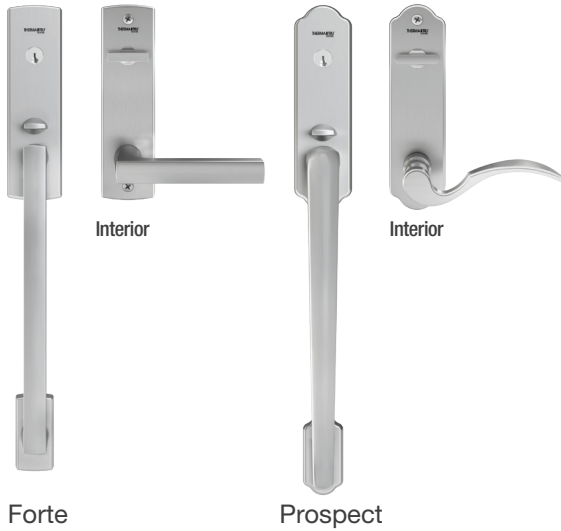
Constructed to provide ventilation without sliding screens blocking the view, vented sidelites work as small swinging doors with convenient removable screens. Engineered for durability and safety with wide patio mullions for strength, and multi-point locking gears and recessed strike plates for security.

# Handleset Options for Standard Door MPLS

Designed to complement Therma-Tru door styles from traditional to contemporary.

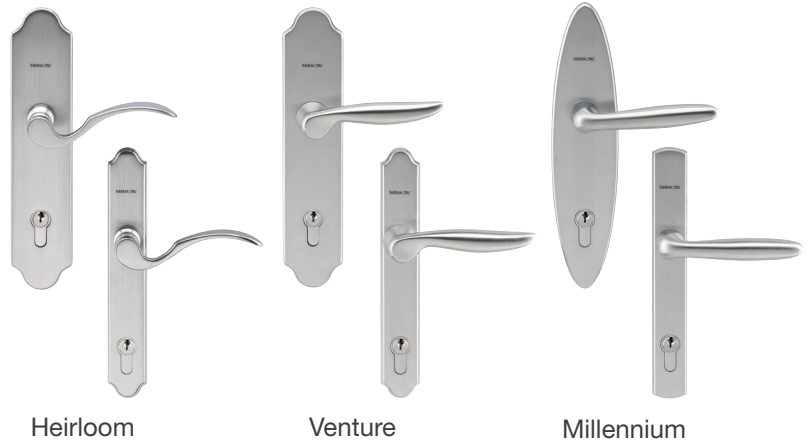
## Grip-Style MPLS

Backplates: Wide  
Locking: Active

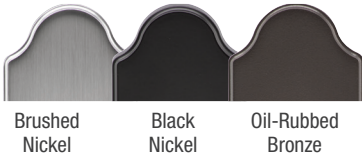


## Lever-Style MPLS

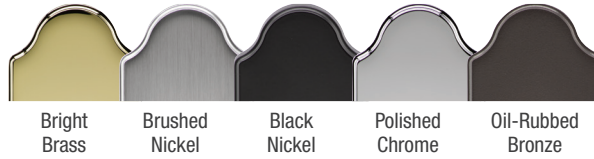
Backplates: Wide, Narrow  
Locking: Active, Inactive



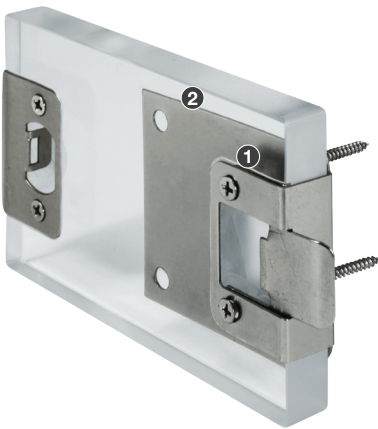
## Grip-Style Finish Options



## Lever-Style Finish Options



# Latch & Deadbolt Strike Plate



Standard vs. Adjustable Security Strike Plate

## Adjustable Security Strike Plate

(Recommended for standard lock and deadbolt handlesets only.)

**Finish Options:**  
Brushed Nickel  
Black Nickel  
Polished Chrome  
Oil Rubbed Bronze  
Stainless Steel  
Zinc Dichomate

A genuine Therma-Tru adjustable security strike plate helps enhance the safety and security of a home, wrapping around the door jamb and fully engaging the frame of the house for added support and strength against forced entry.

- ❶ Wraps around the door jamb for added support and an exact fit.
- ❷ 2-1/2" screws fully engage with the frame of the house for added strength.

\*To confirm code requirements in your jurisdiction, always check with your local building authority.  
Note: See your Therma-Tru seller for available component options.



# Astragals

Astragal



- Attach to the passive door and lock in place with shootbolts to cover the margin between double doors and help complete the seal against air and moisture infiltration.
- Help provide stability, holding power and lasting durability with aluminum construction that provides more strength than wood.
- Offered with a durable, rot-resistant vinyl wrap in a wood-grained, stainable texture or smooth aluminum to complement the look of the door and home.

- 1 Offered with strike plates to receive a latch and deadbolt or multi-point locking system.
- 2 Integrated weatherstrip helps form a tight seal between the astragal and active door when closed.
- 3 Spring clips to engage and disengage the shootbolts.
- 4 Durable boot engineered to work with the active bottom sweep to complete the seal across the sill.
- 5 16-1/2" locking steel slide bolt can be vertically adjusted for a secure fit with the sill and frame.

Astragal Boot



Seals  
across  
sill.

## Enhanced sealing power.

Genuine Therma-Tru. astragals help deliver enhanced sealing power. Our compression-fit astragals feature a secure bottom boot designed to fit tightly to the astragal and engineered to work with the active bottom sweep for an enhanced seal across the sill.

## Stainable Astragal +



Note: Shown in Oak grain with Redwood stain.

Stainable Shown in Rustic Clay stain.



Oak Grain

Fir Grain

## Aluminum Astragal +



Note: Coastal option also available with thicker aluminum construction and a longer shootbolt to provide improved resistance to wind-driven moisture infiltration.\*

Aluminum



Bronze

White

**Heights:**  
6'8"  
7'0"  
8'0"

**Width:**  
7/8"

**Configurations:**  
Inswing  
Outswing  
Multi-Point Lock  
Double Bore  
Left-Handed  
Right-Handed

**Weatherstrip:**  
Bronze

# Engineered to work together.

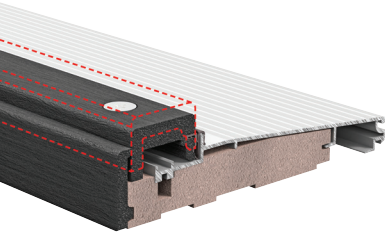
Therma-Tru® door system components are designed to work together with our door families to create a tight seal.

Door Collection	Corner Seal Pad	Weatherstrip	Hinges
<p><b>Classic Craft®</b></p> 	<p><b>Classic Craft 7-Shape Pads</b> ✚</p> 	<p><b>Medium-Reach Weatherstrip</b> ✚</p> <p>For square edge doors.</p> <p>All Sides</p> 	<p><b>Classic Craft Ball-Bearing Hinge</b> ✚</p> 
<p><b>Fiber-Classic® &amp; Smooth-Star®</b></p> 	<p><b>Fiber-Classic / Smooth-Star 7-Shape Pads</b> ✚</p> 	<p><b>Medium-Reach Weatherstrip</b> ✚</p> <p>Hinge Side</p>  <p><b>Long-Reach Weatherstrip</b> ✚</p> <p>For bull edge doors.</p> <p>Lock Side &amp; Head</p> 	<p><b>Self-Aligning Ball-Bearing Hinge</b> ✚</p> <p>Tabs for pass through door machining.</p> 
<p><b>Profiles™ &amp; Traditions Steel</b></p> 	<p><b>Basic Fixed Pads</b> ✚</p> 	<p><b>Medium-Reach Weatherstrip</b> ✚</p> <p>Hinge Side</p>  <p><b>Long-Reach Weatherstrip</b> ✚</p> <p>For bull edge doors.</p> <p>Lock &amp; Head Side</p> 	<p><b>Self-Aligning Hinge</b> ✚</p> <p>Tabs for pass through door machining.</p> 

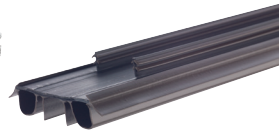
Most common product positioning shown.  
 Contact your Therma-Tru seller or see tech manual for details and options.

**Sill & Door Bottom**

**Composite Adjustable Sill** ✚

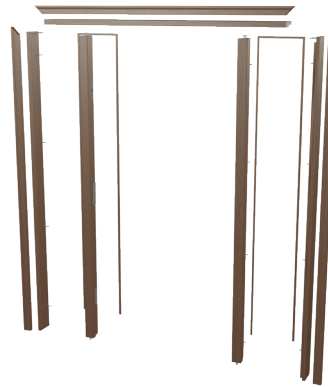


**Kerf-Applied Dual-Bulb / Dual-Fin Bottom Sweep** ✚



**Door Frame**

**Composite Door Frame** ✚

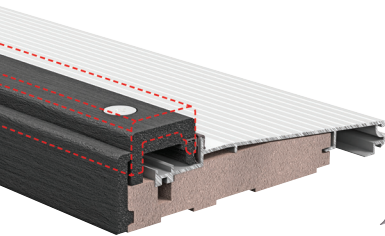


**Locking System**

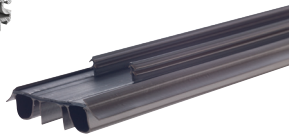
**Multi-Point Locking Systems** ✚



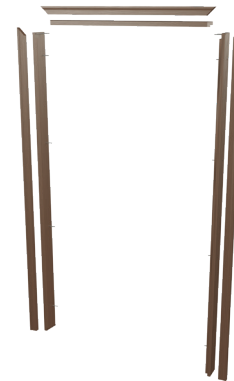
**Composite Adjustable Sill** ✚



**Kerf-Applied Dual-Bulb / Dual-Fin Bottom Sweep** ✚



**Composite Door Frame** ✚



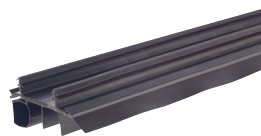
**Multi-Point Locking Systems** ✚



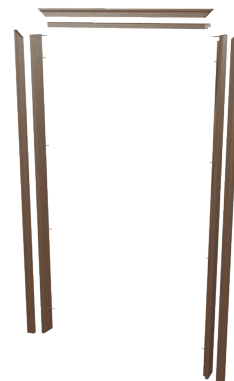
**Basic Composite Adjustable Sill**



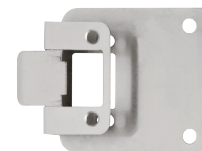
**Kerf-Applied Single-Bulb Bottom Sweep**



**Composite Door Frame** ✚



**Latch & Deadbolt Strike Plate**





## Turn to the door system experts.

Visit our online replacement parts configurator and helpful videos to learn how to maintain the integrity of a complete door system with genuine Therma-Tru® components – [thermatru.com/parts](https://thermatru.com/parts).

**THERMA-TRU®**  
DOORS

Where Home Begins.™

[thermatru.com](https://thermatru.com)  
1-800-THERMA-TRU (843-7628)  
1750 Indian Wood Circle  
Maumee, OH 43537



©2022 Therma-Tru Corp. All rights reserved.  
THERMA-TRU and the Therma-Tru Logo are trademarks of Therma-Tru Corp. Registered trademarks are registered in the U.S. and may be registered internationally. Therma-Tru Corp. is an operating company of Fortune Brands Home & Security, Inc. ENERGY STAR is a government program that helps consumers protect the environment through superior energy efficiency and is a registered trademark of the U.S. Department of Energy and the U.S. Environmental Protection Agency. Part #MAFCOMP22 MTZT / DEC 2021