

fiberon® CitySide

Maximize your view.

The sleek, minimalist design of CitySide railing maximizes the view beyond your deck or porch, while the durable, long-lasting aluminum construction minimizes maintenance time and expense. Engineered with a pre-punched bottom rail for ease of install, this lightweight railing solution delivers on reliability, beauty and performance.

- Clean lines and contemporary styling work with any architecture.
- Pre-punched bottom rail enables faster baluster installation.
- Premium powder-coated aluminum resists rust.
- No exposed welds or cuts help prevent injuries.
- Posts feature pre-welded brackets, providing a clean appearance and reducing installation time.
- Low-maintenance performance material reduces upkeep time and expense.
- Lighting accessories sold separately.

Sold in sections as follows:

- 6- and 8-ft. line or stair sections for 36-in. rail height.
 - 6- and 8-ft. line or 6 ft. stair sections for 42-in. rail height.
- Railing sections include top and bottom rails, square metal balusters, spacer clips and crush block with screws. Railing brackets are sold separately or pre-welded to metal posts.

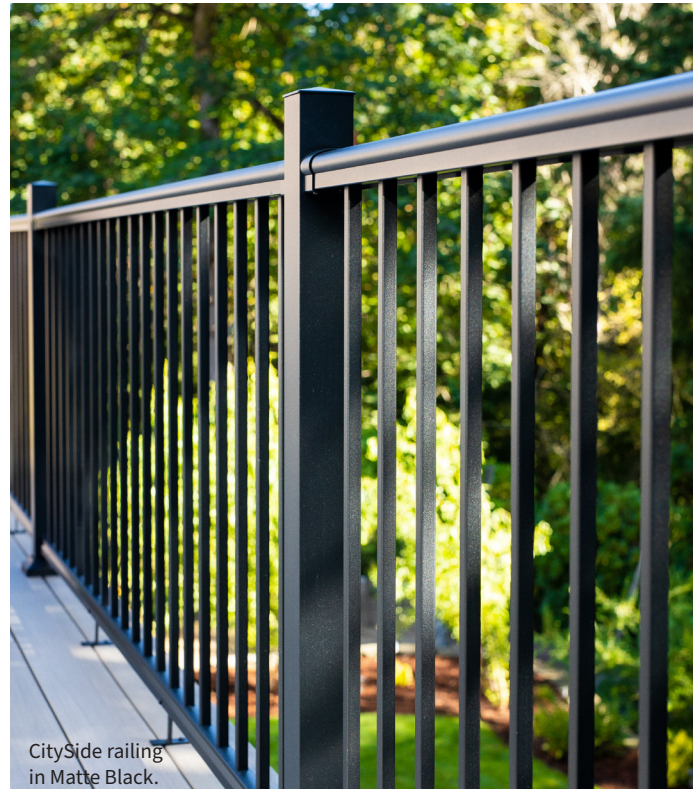
Metal posts sold as follows:

- Line Post including two sets of pre-welded brackets on opposing sides.
- End Post including one set of pre-welded brackets on one side.
- Stair Post with no pre-welded brackets.
- Corner Post including two sets of pre-welded brackets on two adjacent sides.

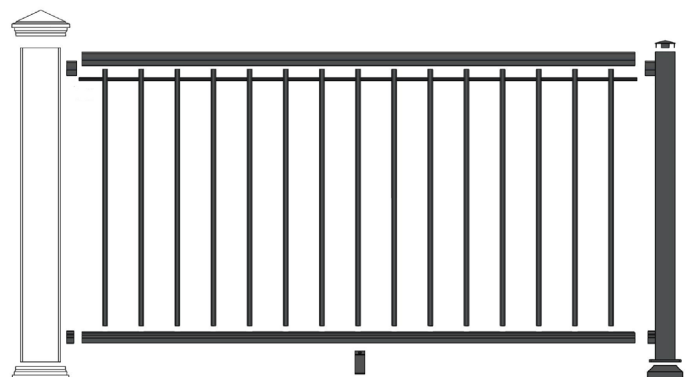
5-in. post sleeve kits are available, with caps and mouldings included.

4-in. post sleeves, 5-in. post sleeves, caps and mouldings are also sold separately.

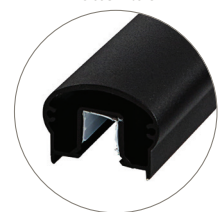
Installation hardware is sold separately.



CitySide railing
in Matte Black.



Matte Black



Top Rail = 2.25 in. x 1.71 in.
Bottom Rail = 1.32 in. x 1.31 in.

fiberon® CitySide



25
YEAR

WARRANTY

Performance
Limited Residential

CitySide railing in Matte Black.